

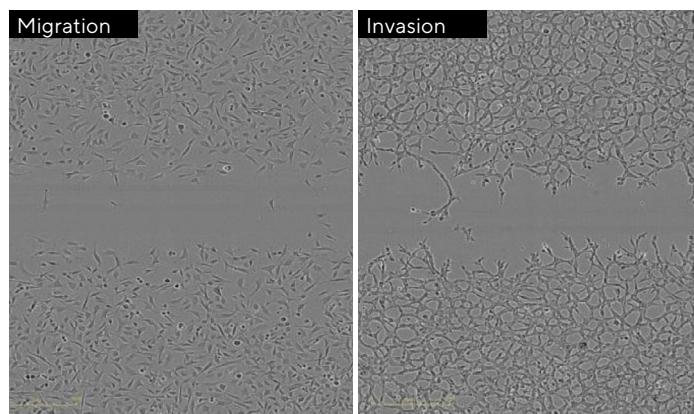
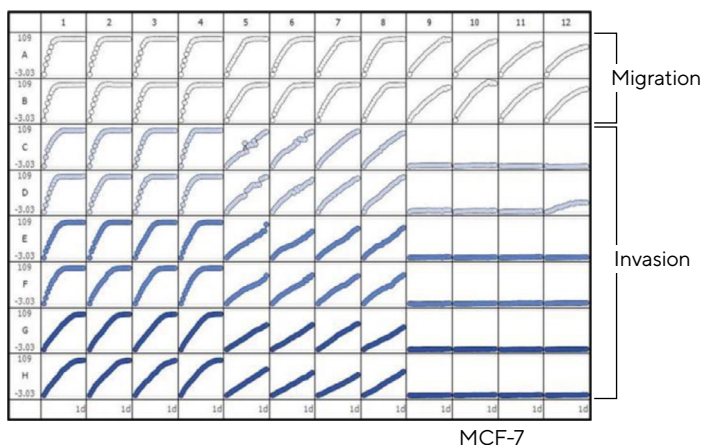
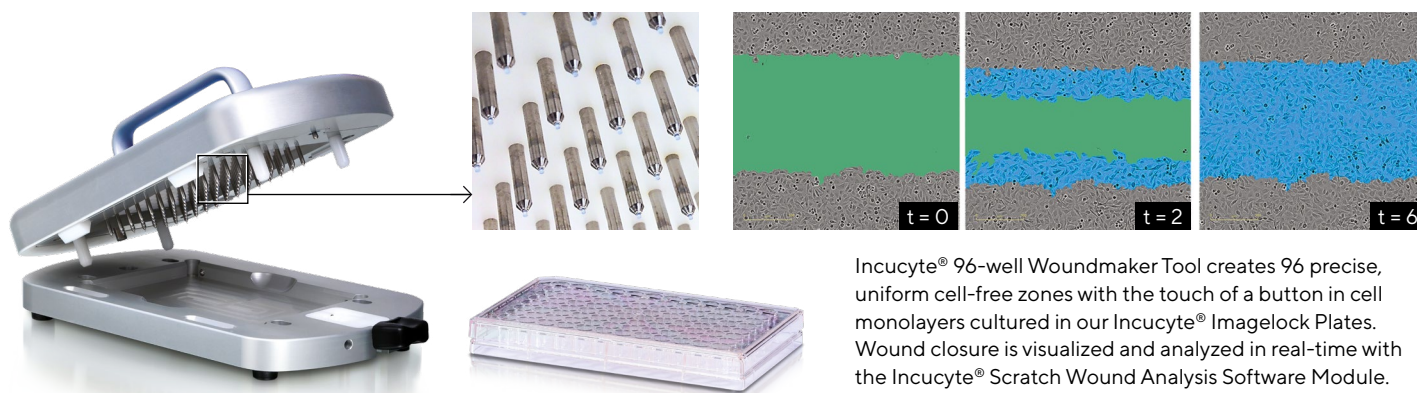
# Invasion and Migration Assays

Incucyte® Scratch Wound and Chemotaxis Assays allow you to continuously monitor and analyze migration and invasion using purpose-built consumables and automated software.

- Unlock your productivity with optimized protocols, peripherals and automated analysis
- Confirm cell movement and morphology with images and movies—all from inside your incubator
- Perform reproducible 96-well kinetic migration or invasion assays using the cell model of your choice—adherent or non-adherent

## Application Spotlight: Scratch Wound Migration and Invasion Assay

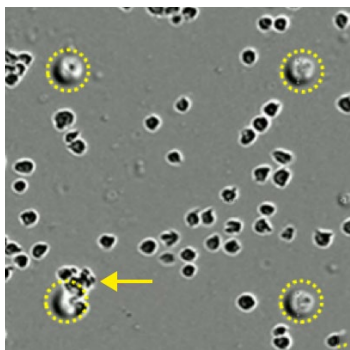
Make label-free, quantitative measurements of migration and invasion while visualizing morphological changes due to treatment effects, using the integrated Incucyte® Scratch Wound Analysis Software Module.



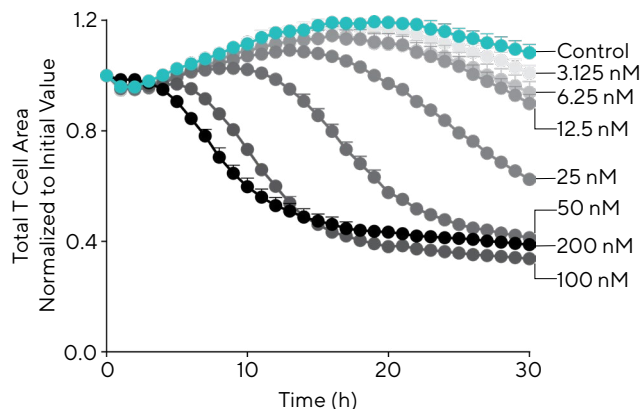
Microplate graph showing progression of differential cell migration and invasion of three different cell types using the Relative Wound Density metric. Representative images of HT-1080 fibrosarcoma cells highlight differences in morphology of cells during migration versus invasion.

# Application Spotlight: Incucyte® Chemotaxis Assay

Maximize your productivity and insight into dynamic cell movement with automated, label-free imaging and analysis using optically clear Incucyte® Clearview 96-well Chemotaxis Plates and Incucyte® Chemotaxis Analysis Software Module.



Chemotaxis of Primary T Cells to SDF-1 $\alpha$



Incucyte® Clearview 96-well Chemotaxis Plates provide an optically clear surface for label-free imaging and analysis of chemotactic cell migration or invasion. Cells are added to the upper chamber and chemoattractant to the lower reservoir plate. Chemotactic transmembrane migration is automatically quantified as the cells migrate through laser etched pores (yellow circles) toward chemoattractant. Example data of concentration-dependent SDF-1 $\alpha$  mediated chemotaxis of CD3/CD28 activated human T cells.

## Ordering Information

	Product	Description	Cat. No.	Instrument Compatibility
<b>Scratch Wound Cell Migration and Invasion</b>	<b>Analyze 96-well Incucyte® Scratch Wound Assay images to analyze cell migration and invasion with or without labels.</b>			
	Incucyte® Scratch Wound Analysis Software Module	1 module	9600-0012	SX5, S3, SX1
	Incucyte® 96-well Woundmaker Tool	1 wounder	4563	SX5, S3, SX1
	Incucyte® Cell Migration Kit	Woundmaker Tool 2 Rinse boat assemblies 15 Imagelock Plates 1 Incucyte® Microplate Tray Alconox	BA-04858	SX5, S3, SX1
	Incucyte® Cell Invasion Accessories Kit	2 Biocision Coolbox Microplate Systems 3 Coolsink XT96F 1 Biocision Coolbox kit	4444	SX5, S3, SX1
	Incucyte® Imagelock 96-well Plate	Pack of 10 plates Pack of 50 plates	BA-04856 BA-04857	SX5, S3, SX1 SX5, S3, SX1
<b>Chemotaxis Cell Migration and Invasion</b>	<b>Track and quantify label-free and fluorescently labeled chemotaxis cell migration and invasion in microplate format.</b>			
	Incucyte® Chemotaxis Analysis Software Module	1 module	9600-0015	SX5, S3, SX1
	Incucyte® Clearview 96-well Chemotaxis Plates	1 plate Pack of 10 plates	4582 4648	SX5, S3, SX1 SX5, S3, SX1